



ATPOL II™

ALL-TEST PRO ON-LINE II™



For Complete Electrical Signature Analysis (ESA)

The Most Complete Motor Electrical Signature and Power Quality Analysis Instrument on the Market!
For AC/DC and with Superior Analytical Powers!

- SAFE: CAT IV RATING FOR 600 V
- RUGGED: TOUGH CASE WITH RUBBERIZED BOTTOM
- EASY TO CARRY - EASY TO USE: LIGHTWEIGHT, HANDHELD - USER FRIENDLY
- UNLIMITED MEMORY: REPLACEABLE MEMORY CARD AVAILABLE
- WARRANTY: TWO YEARS LIMITED
- CE CERTIFIED
- WIRELESS BLUETOOTH: NO CABLE FROM ATPOL II TO PC
- ECONOMICAL AND QUICK RETURN ON INVESTMENT: LOWEST COST ON THE MARKET TODAY
- SERVICE BACK-UP AND FREE EMAIL AND PHONE SUPPORT
- PROFESSIONAL TRAINING AVAILABLE IN GROUPS OR IN YOUR OWN PLANT - WORLD WIDE

COMPLETE MOTOR ELECTRICAL SIGNATURE ANALYSIS AND POWER QUALITY MANAGEMENT FOR AC AND DC MOTORS

EASY TO CARRY - EASY TO USE

The ATPOL II™ (ALL-TEST PRO ON-LINE II™) tester is the most complete On-Line Motor and Power Diagnostic instrument available today – all in a hand held, lightweight instrument. Rugged case with rubberized bottom for a safe grip. No need to carry a PC or other heavy equipment in the field, the ATPOL II fits in a small pouch, which can be slung over the shoulder or carried in a tool-belt.

No need to enter nameplate data before data collection, only prior to analysis!

Should you make a mistake when entering data – no problem. Just correct the data before analysis.

CAT IV – THE ATPOL II HAS THE INDUSTRY'S HIGHEST SAFETY STANDARDS

The ATPOL II has passed the highest standards for 600V and is suitable for testing at the service entrance.

SUPERIOR DIAGNOSTIC POWERS – SMART & AUTOMATIC

The ATPOL II offers many Software and Data Analysis Advantages with more data available for more choices of evaluation. Many key determinations are done automatically, such as:

- Line Frequency, Running Speed and Pole Pass Frequency
- Software automatically looks for patterns related to Stator Slot and Rotor Bar fault frequencies
- Bearing numbers can be registered, enabling software to automatically determine if a bearing problem exists
- Automatic determination of static and dynamic eccentricity

The ATPOL II delivers superior AC diagnostic capabilities with Rotor Health, Air Gap or Eccentricity and Stator Health together with all mechanical issues, such as bearings, loose belts, gearboxes, etc. The instrument also provides excellent Diagnostic DC testing for Motors, Generators and Alternators.

PATENT PENDING TECHNOLOGY FOR ALWAYS MAKING CORRECT CONNECTIONS

A new method for making sure that all leads have been applied correctly is being patented for the ATPOL II. No more misses or strange results due to faulty application of the leads!

UNLIMITED MEMORY

With the optional memory card feature activated you have virtually unlimited storage for your test-data! The instrument comes standard with internal memory for 20 tests.

NO PC COMMUNICATION CABLE NECESSARY

The ATPOL II is equipped with Bluetooth®* wireless transmission from instrument to PC. No need to keep track of additional cables.

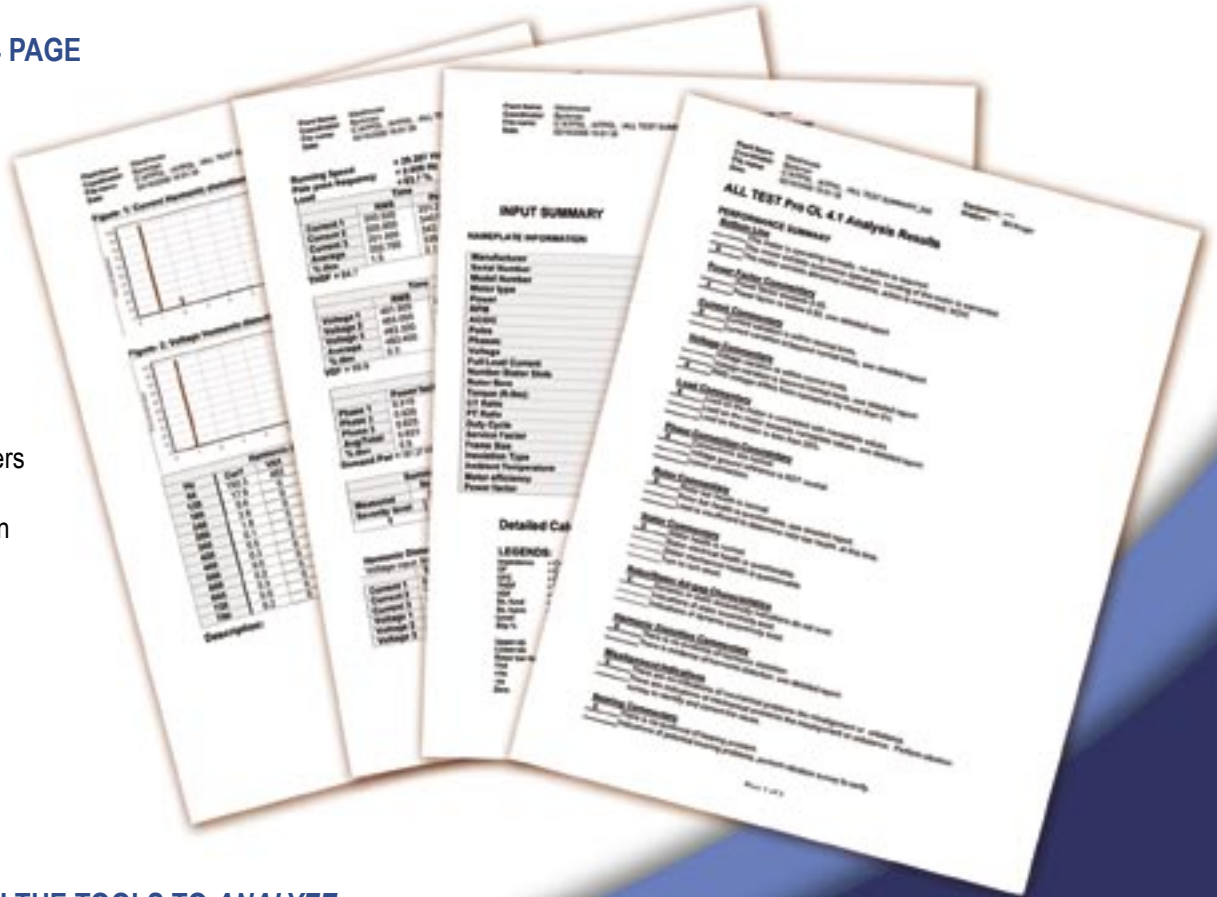


* Bluetooth® is a registered trade mark of Bluetooth SIG, Inc.

TOOLS TO ANALYZE AND REPORT BOTH THE *MECHANICAL* AND *ELECTRICAL* CONDITION OF THE ELECTRICAL CIRCUIT

COMPREHENSIVE 4 PAGE SUMMARY REPORT DETAILING THE CONDITION OF THE CIRCUIT MAKES YOUR JOB A LOT EASIER!

Automatic analysis of Induction and synchronous Motors, Generators, Transformers and VFD's, as well as mechanical problems on the entire system.



ATPOL II GIVES YOU THE TOOLS TO ANALYZE AND REPORT THE MECHANICAL & ELECTRICAL CONDITION OF THE SYSTEM.

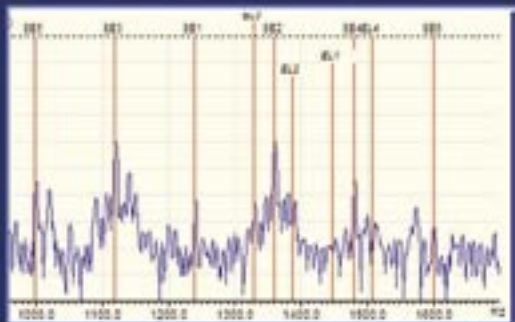
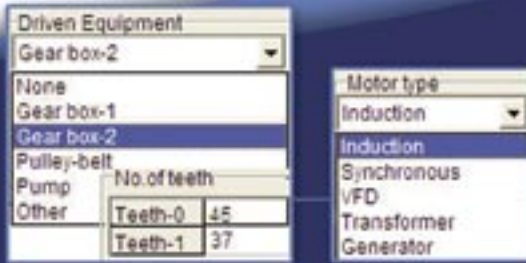
ALL TEST PRO OL 4.1 Analysis Results

SAMPLE OF DIFFERENT PERFORMANCE SUMMARIES

Bottom Line

- This motor is operating normally, no action is required.
- This motor exhibits suspicious operation, trending of the motor is warranted.
- This motor exhibits abnormal indications, action is warranted, NOW.

Performs automatic analysis for Induction and Synchronous Motors, Generators, Transformers, VFD's, as well as mechanical faults on entire system.



Calculates and identifies mechanical as well as electrical faults.

ATPOL II Automatically Identifies and reports Common DC Motor faults, such as broken armature, faulty SCR's, etc.

ALL-SAFE PRO™

PERMANENTLY INSTALLED TEST PANEL FOR HIGHER PRODUCTIVITY,
SAFER ENVIRONMENT AND GOOD OPERATOR CONDITIONS

The perfect compliment to the ATPOL II.

The ALL-SAFE PRO connection box eliminates the need for the operator to suit up in special protective clothing, speeds up the test considerably by eliminating the need to open the panel for placing probes and clamps on energized leads. Installation takes only about one hour, using simple commonly used tools.

The output pins are deactivated when not connected to the ATPOL II so there is no risk for exposure to dangerous voltage.

UL, CSA/UL and CE listed.



ALL-TEST PRO™

ALL-TEST PRO™ ALSO OFFERS OFF-LINE TESTING FOR TROUBLE SHOOTING, PREDICTIVE MAINTENANCE AND QUALITY CONTROL

The ALL-TEST IV PRO 2000 for de-energized testing pin-points early turn-to-turn and coil-to-coil faults, rotor faults, open windings, shorts to ground and any imbalance between phases. Instrument shows immediate results on screen, uploadable to our New 2005 software for further Analysis, Trending and Reporting.

The ALL-TEST PRO 31 is the perfect tool for Trouble Shooting and Quality Control of de-energized motors, rotors, coils and windings. A must have tool for a serious electrician working with motors.

No other testing equipment for electric motors, generators and transformers gives you a more accurate, easy to use and economical way to keep your motors and windings healthy.



Off-line testing for complete analysis of windings and rotor

Off-line testing for Trouble Shooting and Patented Rotor Test of de-energized machinery



The ATPOL II™ kit includes:

- ALL-TEST PRO OL II hand held collector (1)
- 1-100 Amp Test Clamps with leads (4)
- 100-1000 Amp Test Clamps with leads (4)
- Voltage Test Leads with Clamps (2)
- Battery Charger 115V or 230V (1)
- Solid Hard Carrying Case (1)
- Software ATPOL MCS (Motor Circuit Signature) On CD
- Software ATPOL PQC (Power Quality Control) On CD
- USER MANUAL On CD
- Warranty Card (1)

SPECIFICATIONS

ATPOL II weight: Less than 1 ½ lbs (560 gram)
ATPOL II size: 3 ¾" wide x 7 ½" long x 2" deep
(95 mm W x 190 mm L x 50 mm D)
Gross weight for shipping: 22 lbs
Gross size for shipping: 22" x 18" x 16"

For complete technical specification see separate ATPOL II specification sheet.

ALL-TEST Pro, LLC

123 Spencer Plain Rd.
Old Saybrook, CT 06475
Tel 860-395-2988
Fax 860-399-3180
Email info@alltestpro.com
Web www.alltestpro.com

Represented by :

PROGRESSIVE TECHNOLOGY & SERVICES EST.

P.O. Box : 44358, Abu Dhabi, United Arab Emirates

Tel. : +971-2-5555 491 / 5555 492 Fax : +971-2-5555 480, E-mail : ptech@eim.ae

www.progressive-technology.com